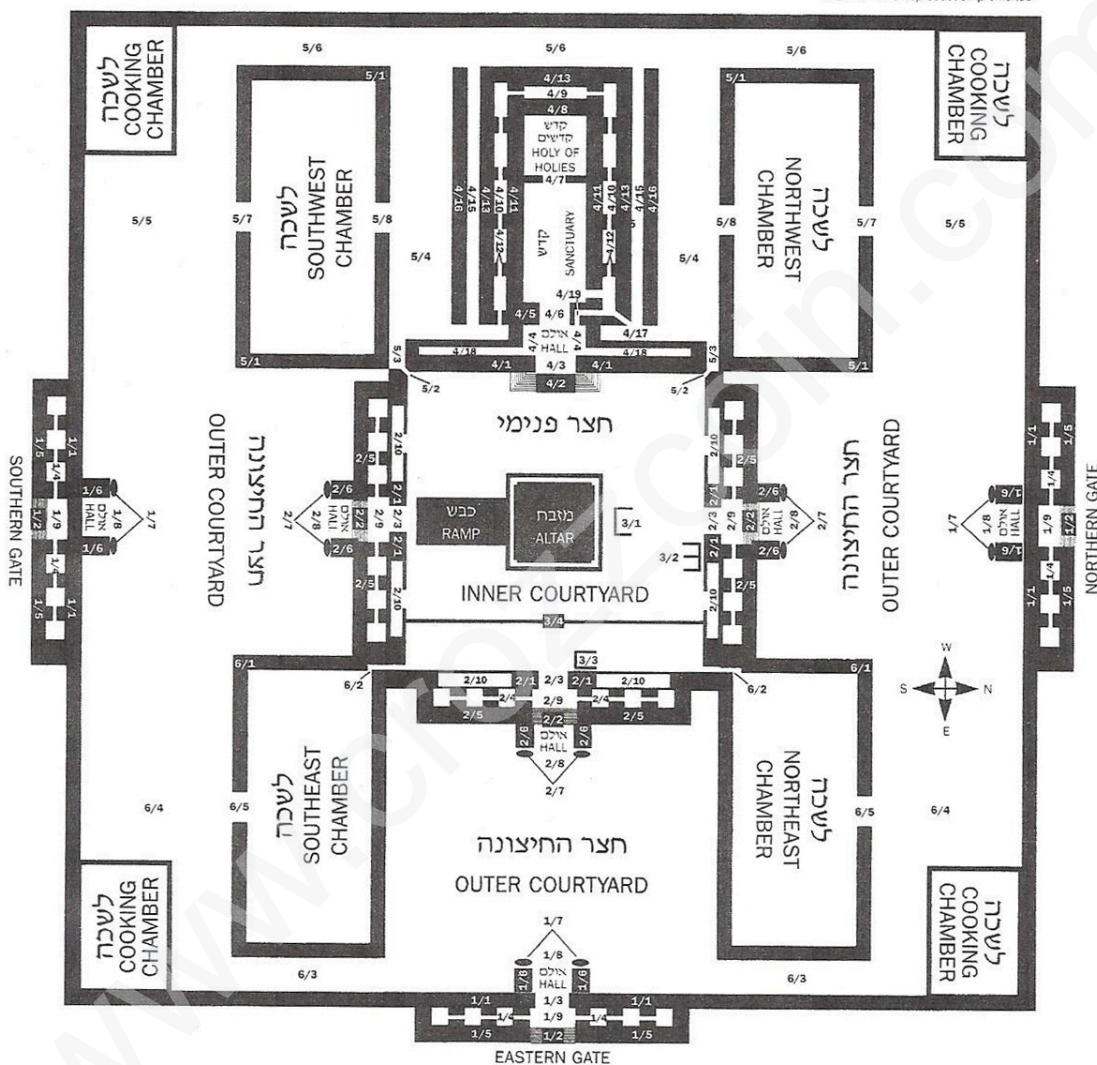


# Third Temple

## 19. THE THIRD TEMPLE

As set forth in Ezekiel Chapters 40-43

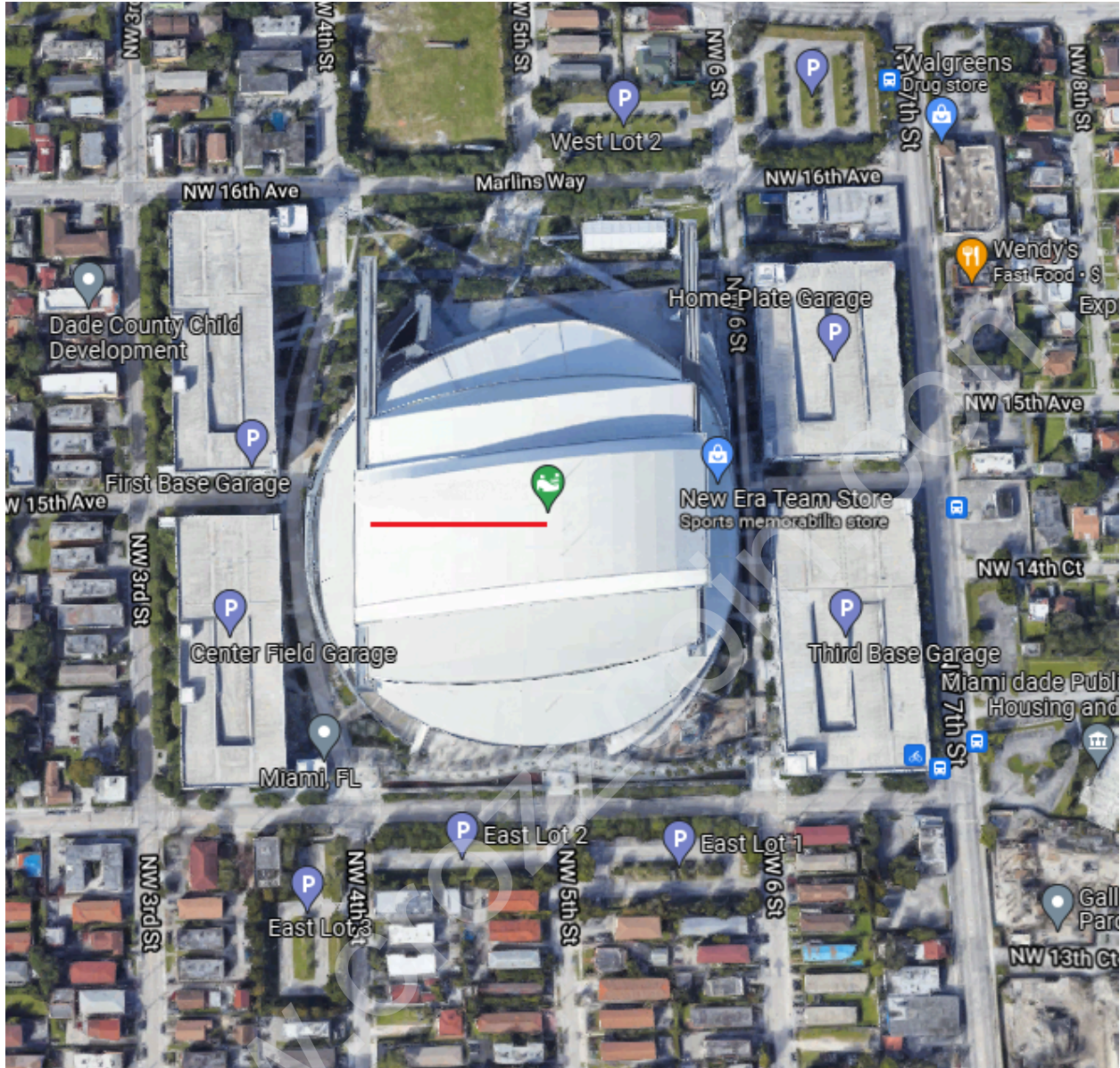
© 1996 MPL. Reproduction prohibited



This diagram attempts to present the layout of Ezekiel's Temple as closely as possible to the way *Rashi* must have understood it.

For a comprehensive analysis of the Temple's design and detailed descriptions of its elements, as well as details regarding the design of this diagram, see *ArtScroll Yechezkel/Ezekiel*, by Rabbi Moshe Eisemann.

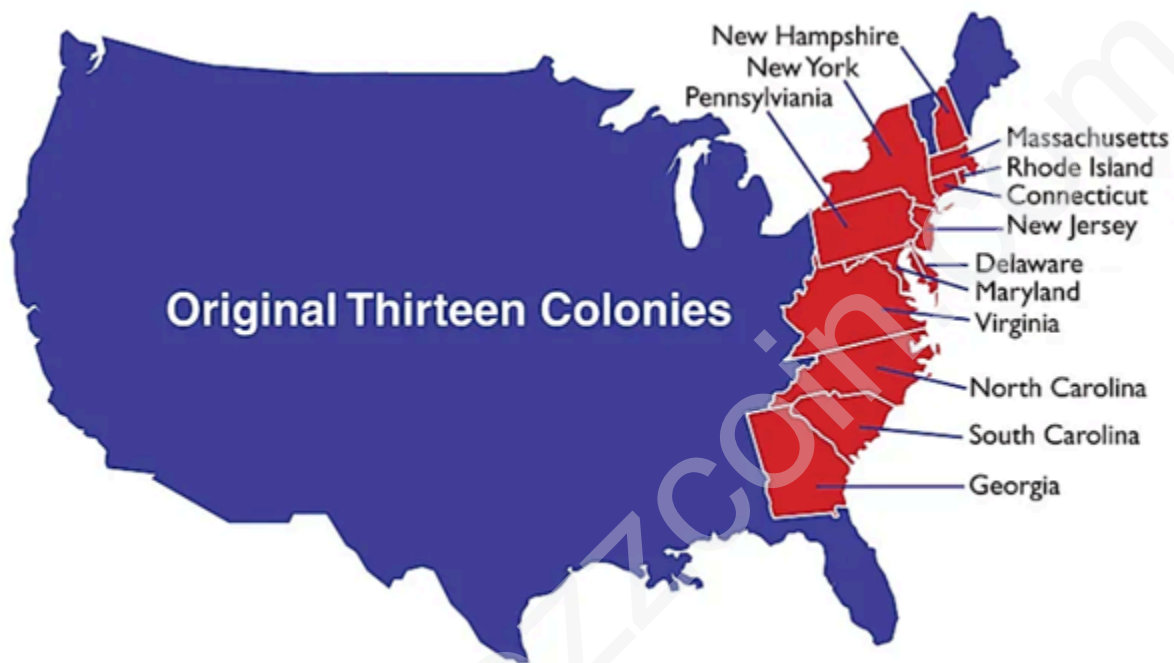
<https://themitzvahproject.org/building-the-third-temple/>



*According to sacred scripture in Judaism, The Messiah is tasked with rebuilding the Third Temple. Whether literally or metaphorically speaking, coincidence should also give us a clue if one instance or the other will be the case.*

*According to the prophet Ezequiel, the planimetry for the Third Temple coincides with a “stadium” in the state of Florida USA, possibly the only stadium in the United States and possibly the whole world with such floor plan. This coincidence merits a closer study of the engineering and architectural design present in this building.*

The Ten Lost Tribes of Israel were those from tribes of Israel that were said to have been exiled from the Kingdom of Israel after it was conquered by the Neo-Assyrian Empire around 720 BCE. They were the following: **Reuben, Simeon, Dan, Naphtali, Gad, Asher, Issachar, Zebulun, Manasseh, and Ephraim** – all but **Judah** and **Benjamin**, both of which were based in the neighbouring Kingdom of Judah, and therefore survived until the Babylonian siege of Jerusalem in 587 BCE. Alongside Judah and Benjamin was part of the Tribe of **Levi**, a total of 13 tribes.



The Alhambra Decree (also known as the Edict of Expulsion; Spanish: Decreto de la Alhambra, Edicto de Granada) was an edict issued on 31 March **1492** by the joint Catholic Monarchs of Spain, Isabella I of Castile and Ferdinand II of Aragon, ordering the expulsion of practising Jews from the Crowns of Castile and Aragon and its territories and possessions by 31 July of that year.

During the same time, Queen Isabella I and King Ferdinand II, agreed to sponsor a journey west. Columbus left Castile in August **1492** with three ships and made landfall in the Americas on the 12th of October, ending the period of human habitation in the Americas now referred to as the pre-Columbian era. His landing place was an island in the Bahamas, known by its native inhabitants as Guanahani.

Coincidentally the same year jews were expelled from Spain, the new world was discovered. Apparently this coincidence seems to be pointing in one direction.

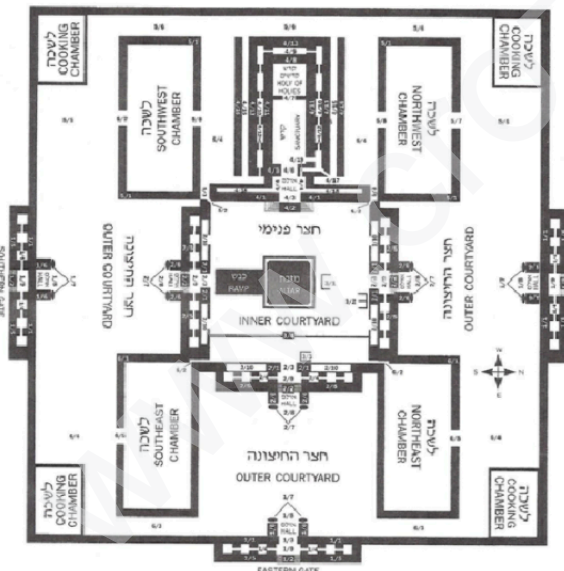


*John 21:11 Simon Peter went up and drew the net to land, full of great fishes, a **hundred and fifty three**; and though there were so many, yet the net was not broken.*

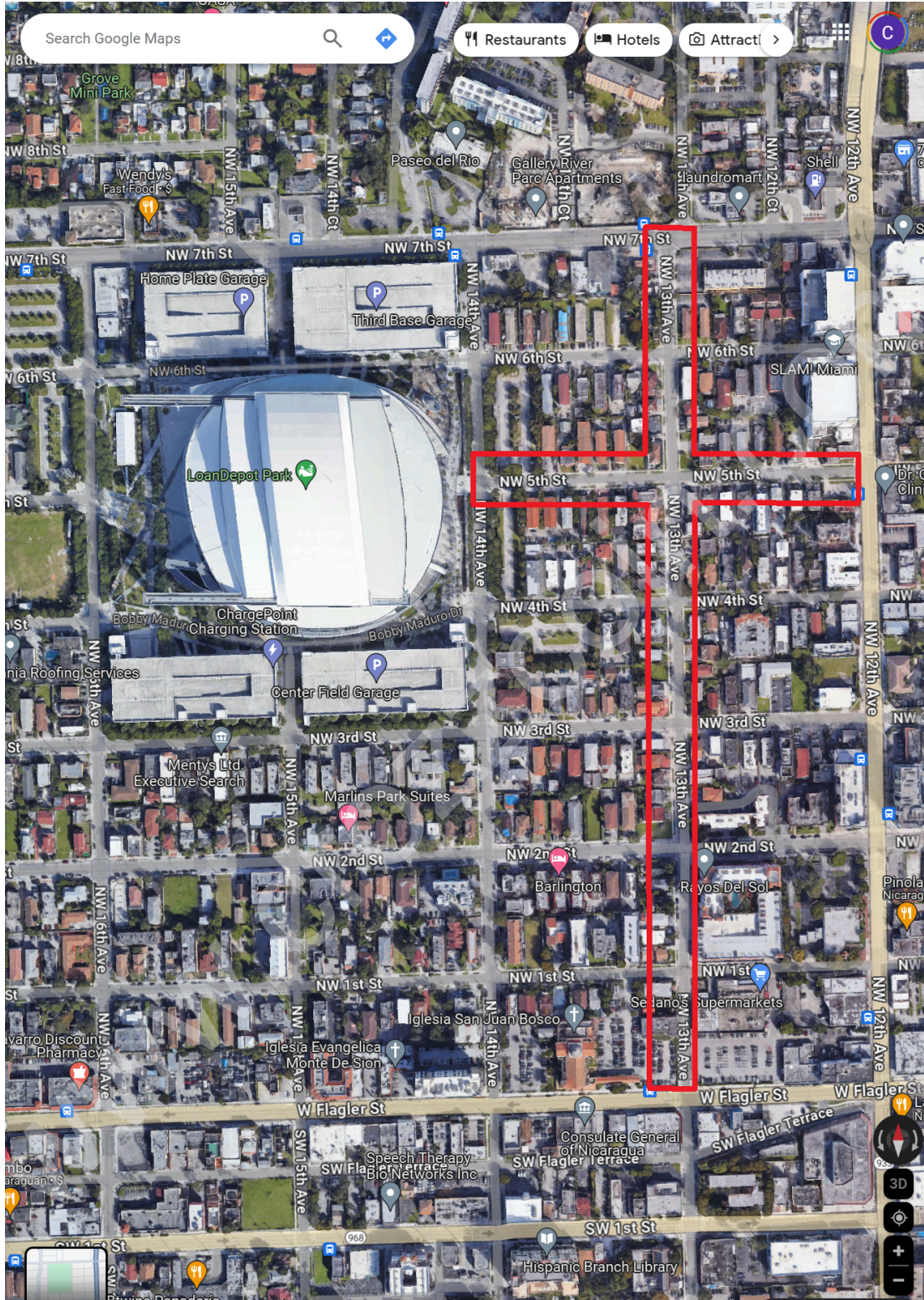


Net fishing in large quantities usually is counted by weight and not units. Seldom do fishermen count a large catch. Is there another secret hidden in numerology in these verses? The actual cross of 13 and 5 sign creates the number 153. Combined with the floor plans of the Third Temple according to Ezequiel, and the unique layout of the stadium in the city of Miami, a very compelling coincidence or message is being conveyed here.

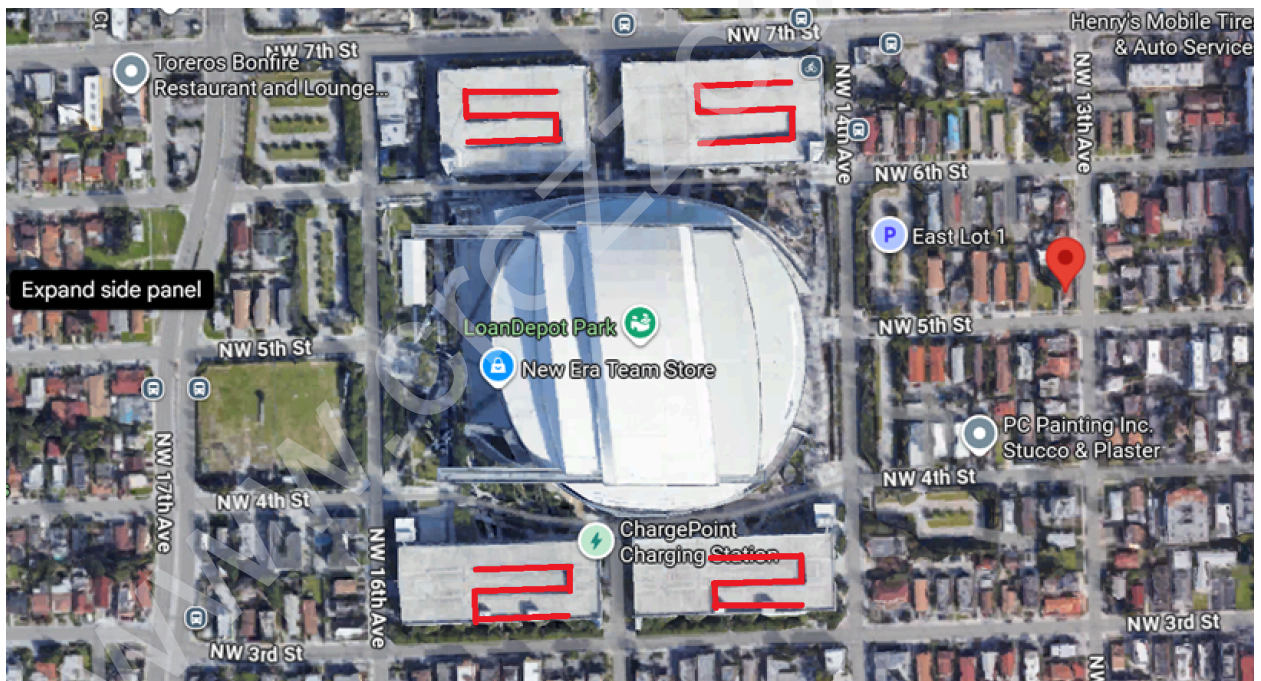
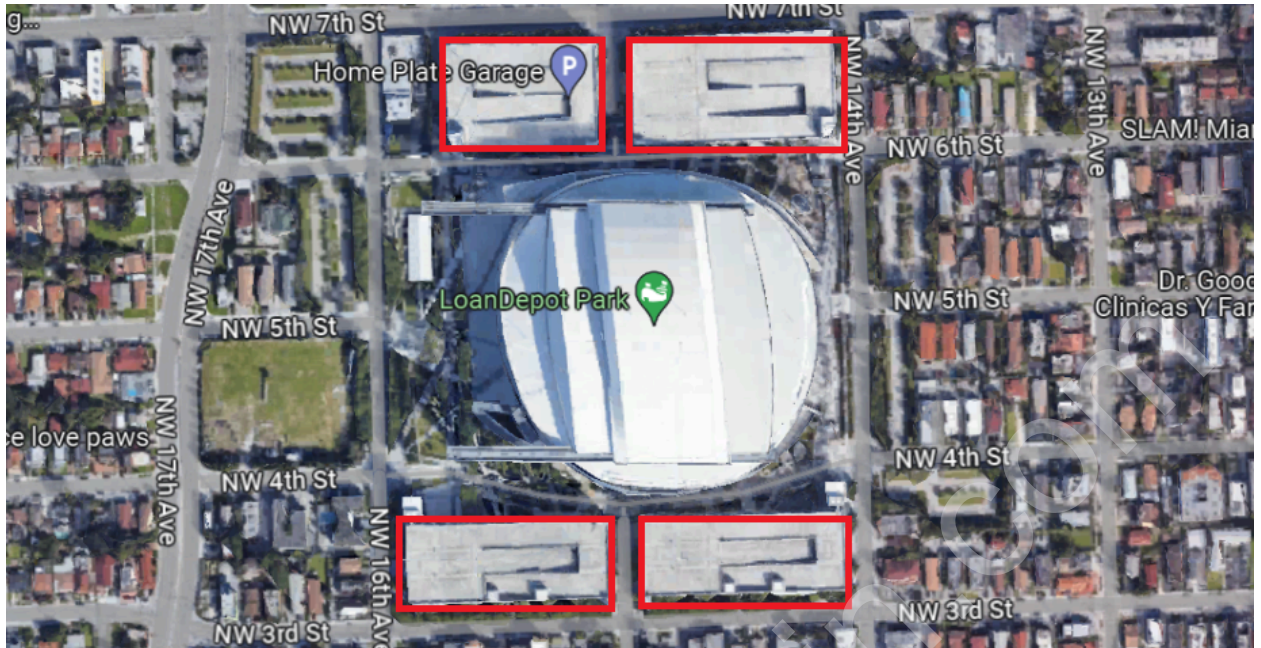
The unlikely likeness of these coincidences leave very little doubt that the actual promised land could be a nation where all people from the world have been migrating to since the birth of this nation.



The furlong was historically viewed as being equivalent to the Roman stadia (stadium), which in turn derived from the Greek system. In the Roman system, there were 625 feet to the stadium, eight stadia to the mile, and 1 1/2 miles to the league. A league was considered to be the distance a man could walk in one hour, and the mile. The actual word "stadium" is used in the Spanish translation of Revelations 21:16.

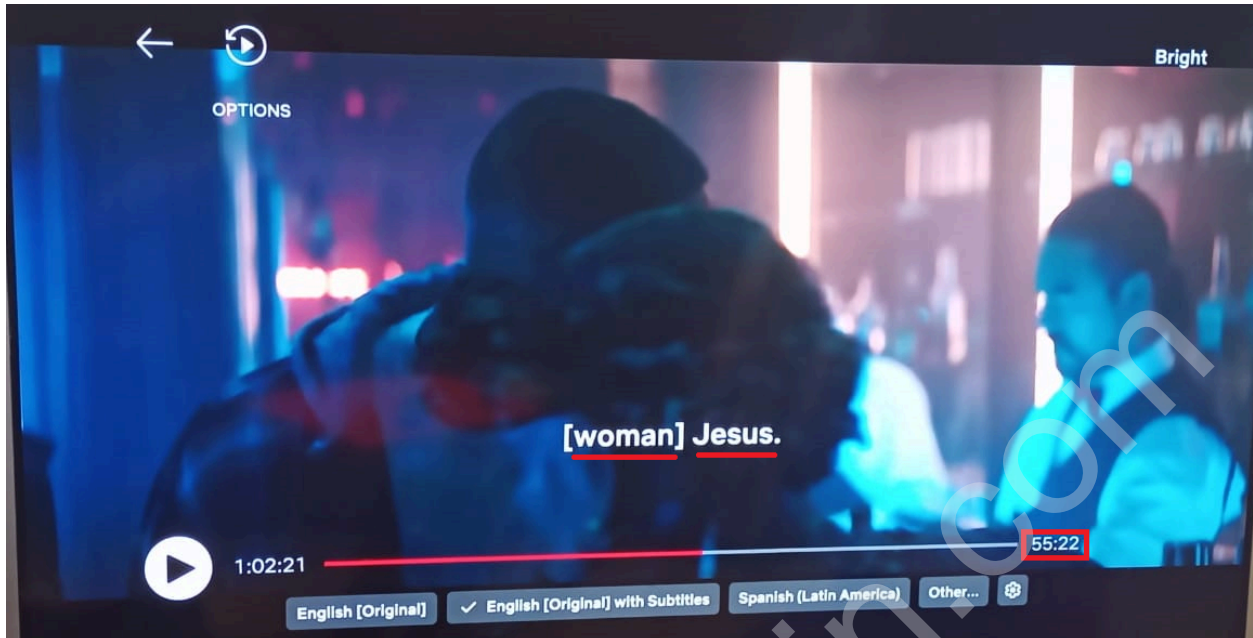


**Revelaciones 21:16** Y la ciudad está situada y puesta en cuadro, y su largura es tanta como su anchura: y él midió la ciudad con la caña, doce mil **estadios**: la largura y la altura y la anchura de ella son iguales.



5522

*Embedded in the actual engineering design of the parking lots in this stadium, the inner walls resemble visually the numbers **55** and **22**. This could all be just a visual coincidence, however given all the previous coincidences this could also be another set of clues that will explain why this is possibly the long awaited Third Temple.*



5522



5522

We can further confirm this could be the case in the stadium and the story in the Orthodox Church where both a male and a female elements are present in this revelation with the numerology in the film "Bright" where the words **Jesus, woman and man** appear at **5522** in the movie's time line. Something essentially impossible to occur unless it was created by a Higher Authority.

